

Focus Flex L7



Light Efficiency:



Light Quality:



Color Temperature:



Output: 1757 lm

Peak: 19940 cd

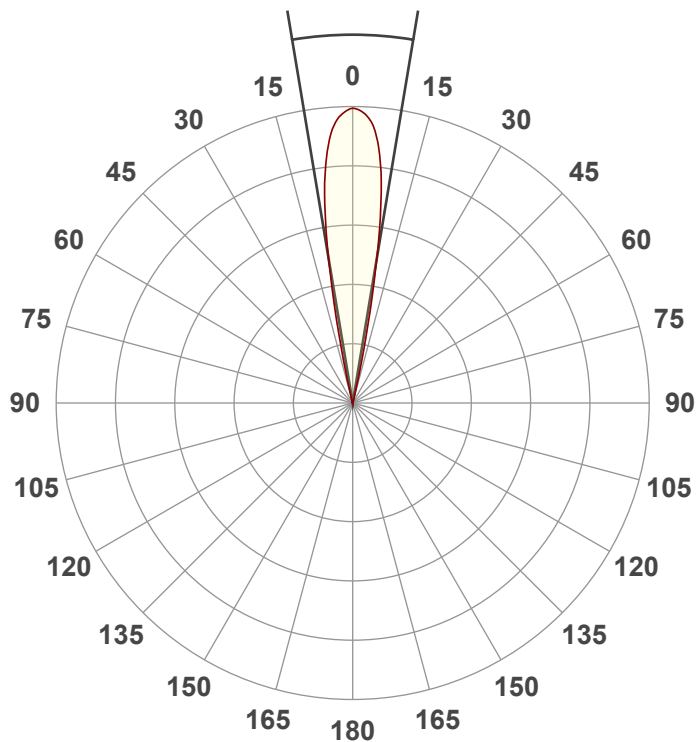
Power: 173.4 W

PF: 0.98



Beam Angle

18.9°



Test:

2700K Zoom 50%

Date:

10/14/2022

Note:

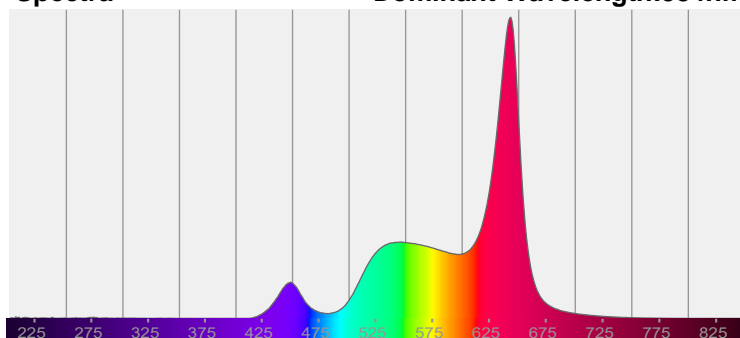
CCT @ 59



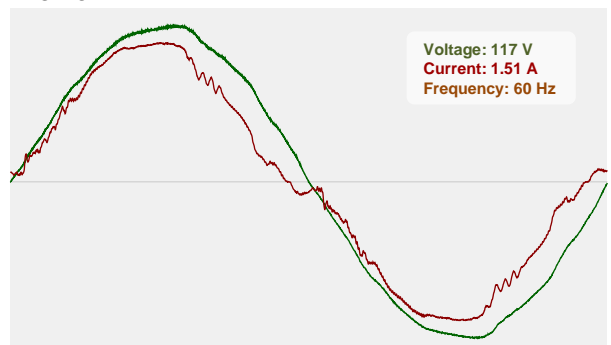
CIE 1931
x: 0.473
y: 0.420

Spectra

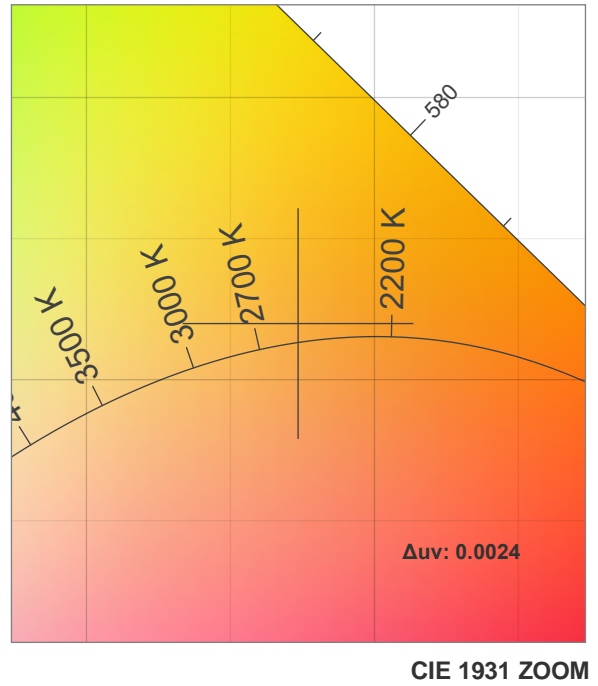
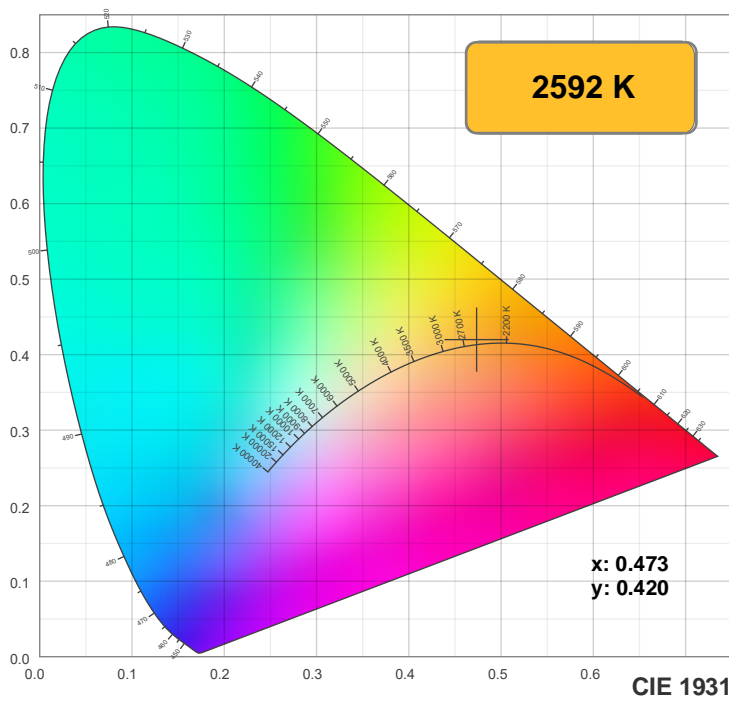
Dominant Wavelength: 584nm



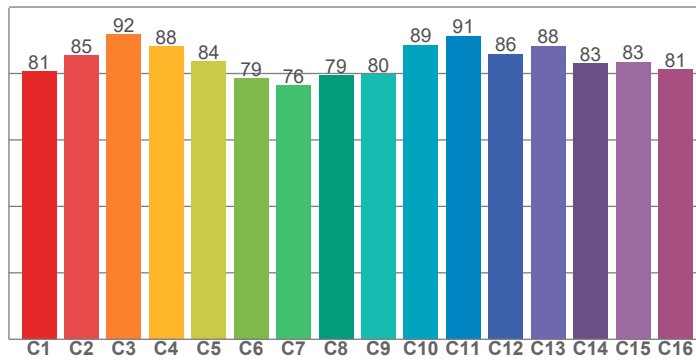
Power



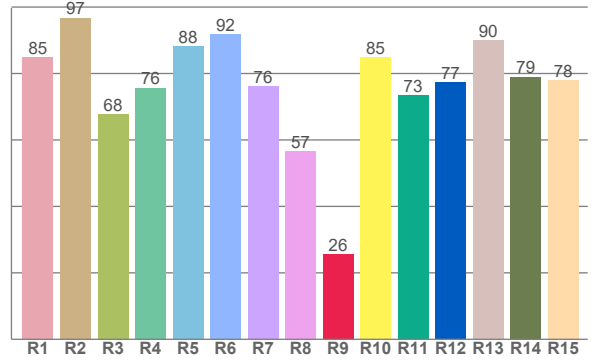
Color Details



TM30: 84.4



CRI: 79.7 (R1-R8)



CRI R values, only R1-R8 are used to calculate final CRI value

R1	R2	R3	R4	R5	R6	R7	R8	R9	R10	R11	R12	R13	R14	R15
84.9	96.8	67.8	75.7	88.2	91.9	76.1	56.6	25.7	84.9	73.4	77.3	90.1	79.0	78.0

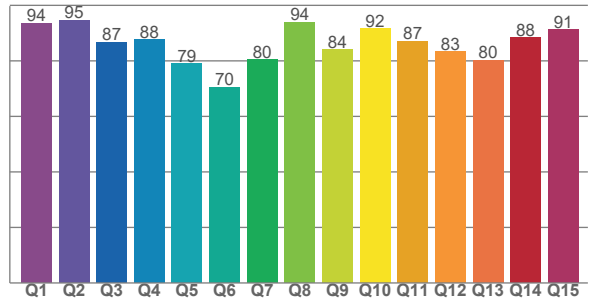
TM30 C values, 16 binned values out of total of 99 C values

C1	C2	C3	C4	C5	C6	C7	C8	C9	C10	C11	C12	C13	C14	C15	C16
80.6	85.4	91.7	88.2	83.6	78.6	76.3	79.4	79.7	88.6	91.3	85.9	88.2	82.9	83.4	81.2

CQS Q values

Q1	Q2	Q3	Q4	Q5	Q6	Q7	Q8	Q9	Q10	Q11	Q12	Q13	Q14	Q15
93.5	94.7	86.7	87.7	79.0	70.5	80.4	93.9	84.1	91.6	87.2	83.3	80.2	88.5	91.2

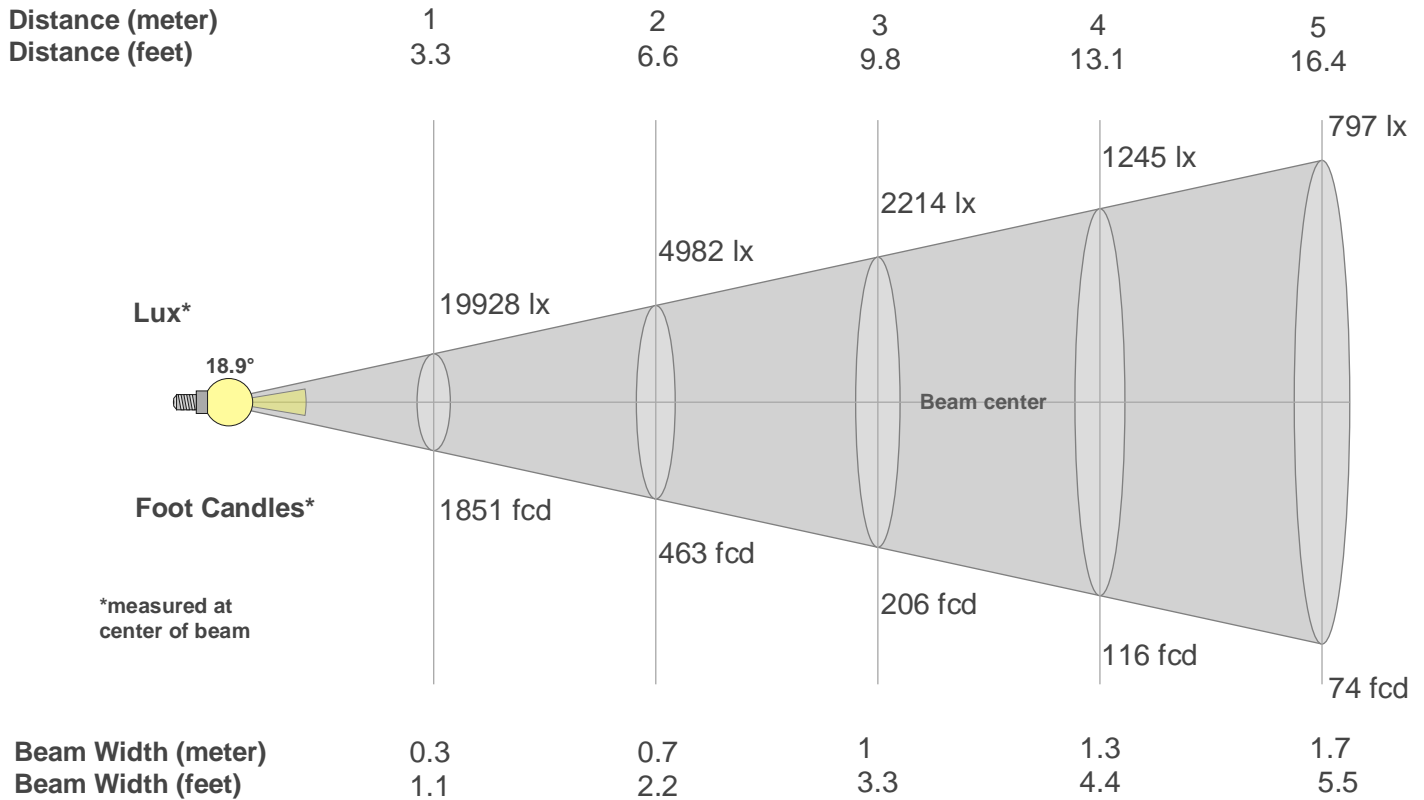
CQS: 84.4



Color Parameters

Color Temperature	Color Rendering Index	Red Component	Color Fidelity	Color Gamut	Color Quality Scale	Color Coordinate CIE 1931	Color Coordinate CIE 1931	Color Coordinate	Color Coordinate	Color Deviation from Black Body
CCT	CRI	CRI R9	TM30 Rf	TM30 Rg	CQS	x	y	u	v	Δuv
2592 K	79.7	25.7	84.4	112.7	84.4	0.473	0.420	0.267	0.355	0.0024

Beam Details



Beam Intensities from 1-20m

m	1	2	3	4	5	6	7	8	9	10	11	12	13	14	15	16	17	18	19	20
ft	3.3	6.6	9.8	13.1	16.4	19.7	23	26.2	29.5	32.8	36.1	39.4	42.7	45.9	49.2	52.5	55.8	59.1	62.3	65.6
lx	19928	4982	2214	1245	797	554	407	311	246	199	165	138	118	102	89	78	69	62	55	50
fcd	1851.4	462.8	205.7	115.7	74.1	51.4	37.8	28.9	22.9	18.5	15.3	12.9	11	9.4	8.2	7.2	6.4	5.7	5.1	4.6

Intensities in 0° C-plane

0°	1°	2°	3°	4°	5°	6°	7°	8°	9°	10°	11°	12°	13°	14°	15°	16°	17°	18°	19°
19.9K	19.8K	19.6K	19.3K	18.7K	17.9K	16.8K	15.3K	13.5K	11.2K	8.5K	5.8K	3.4K	1.7K	0.6K	0.2K	0.0K	0.0K	0.0K	0.0K
100%	99%	98%	97%	94%	90%	84%	77%	68%	56%	43%	29%	17%	9%	3%	1%	0%	0%	0%	0%

Intensities in 90° C-plane

0°	1°	2°	3°	4°	5°	6°	7°	8°	9°	10°	11°	12°	13°	14°	15°	16°	17°	18°	19°
19.9K	19.8K	19.6K	19.3K	18.7K	17.9K	16.8K	15.3K	13.5K	11.2K	8.5K	5.8K	3.4K	1.7K	0.6K	0.2K	0.0K	0.0K	0.0K	0.0K
100%	99%	98%	97%	94%	90%	84%	77%	68%	56%	43%	29%	17%	9%	3%	1%	0%	0%	0%	0%

Intensities in 180° C-plane

0°	1°	2°	3°	4°	5°	6°	7°	8°	9°	10°	11°	12°	13°	14°	15°	16°	17°	18°	19°
19.9K	19.8K	19.7K	19.4K	18.9K	18.1K	17.1K	15.6K	13.6K	11.3K	8.4K	5.7K	3.2K	1.5K	0.6K	0.1K	0.0K	0.0K	0.0K	0.0K
100%	100%	99%	97%	95%	91%	86%	78%	68%	57%	42%	29%	16%	8%	3%	0%	0%	0%	0%	0%

Intensities in 270° C-plane

0°	1°	2°	3°	4°	5°	6°	7°	8°	9°	10°	11°	12°	13°	14°	15°	16°	17°	18°	19°
19.9K	19.8K	19.7K	19.4K	18.9K	18.1K	17.1K	15.6K	13.6K	11.3K	8.4K	5.7K	3.2K	1.5K	0.6K	0.1K	0.0K	0.0K	0.0K	0.0K
100%	100%	99%	97%	95%	91%	86%	78%	68%	57%	42%	29%	16%	8%	3%	0%	0%	0%	0%	0%

Beam Angle 50%	Field Angle 10%	Cutoff Angle 2,5%	Intensity Ratio in 120° Cone	Intensity Ratio in 90° Cone
18.9°	25.6°	28.4°	100.0%	100.0%